

Terreno en las afueras de Santanyí

Terreno urbanizable

Santanyí, 07650 Santanyí, BALEARES

650.000 €



Detalles

Dormitorios

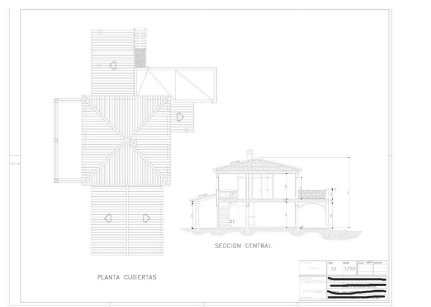
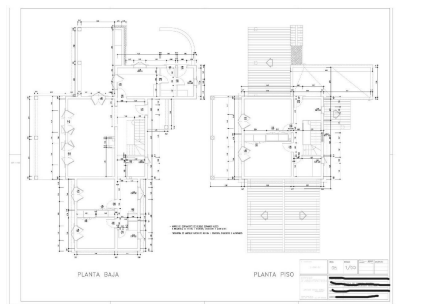
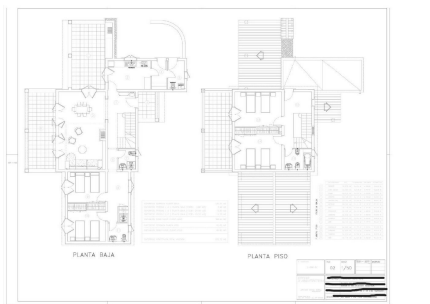
Baños

Tamaño de área 0.00 m²

Área terrestre 16160 m²

Más información

Land near Santanyí. The access is by a quiet asphalted road and it is easy to go by bike (the main square is about 1500 meters far away). There is a project for a house with 232 m2 but it can be extended up to 515 m2. The property already has electricity connection and water supply. The plan is ready for a two floors traditional majorcan country house with 4 bedrooms, swimming pool and terraces. All the plot is enclosed with traditional stone wall.~



¡Póngase en contacto con nosotros!

Gottfried Ederer

Teléfono Movil: +34 611 556 414

Email: gottfried.ederer@remax.es